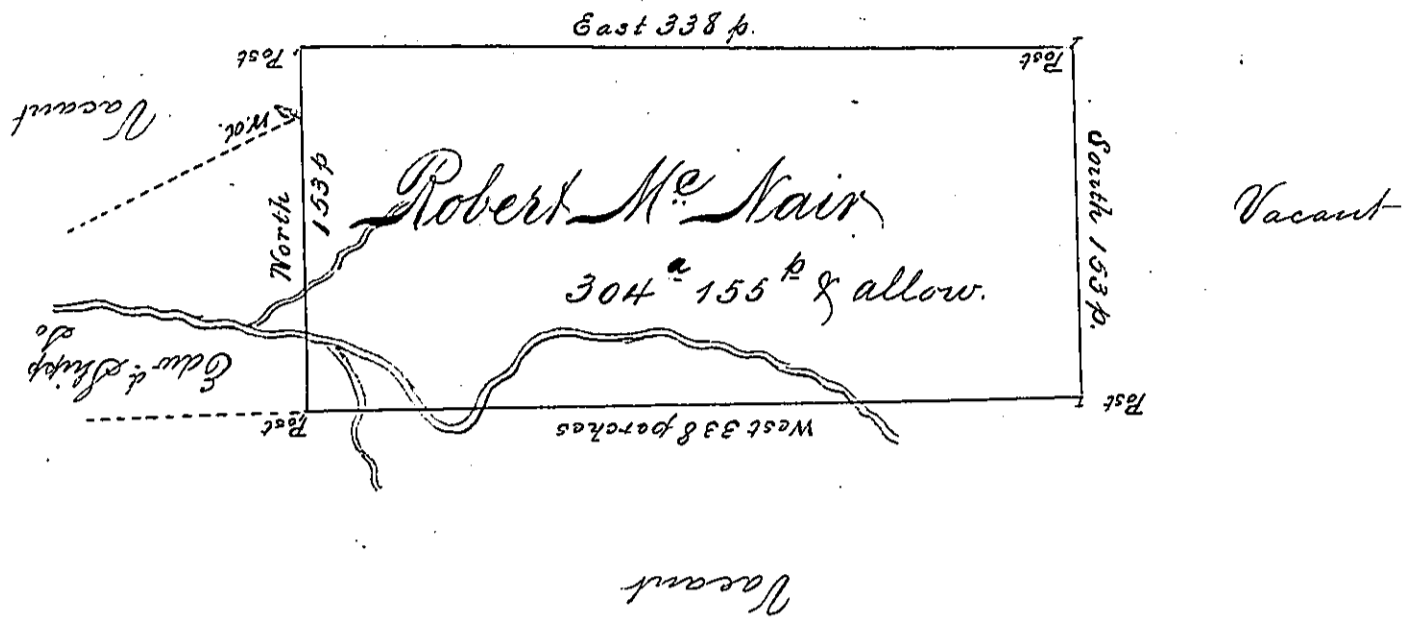


John McNaairs Land



A Draught of a Tract of Land called
 Situate on the Waters of Shamokin Creek adjoining land
 Surveyed for Edward Shippen Junr^r Esq^r and John Mc Nair
 in the County of Northumberland containing three hundred
 and four acres and one hundred and fifty five perches besides
 the usual Allowance of 6 p Cent for Roads &c Surveyed for
 Robert Mc Nair the 22^d day of May 1773 In pursuance of
 an Order dated the 19th day of August 1769. Number 3732
 Chas. Stewart Dep Sur^r

To John Lukens Esq^r
 Survey^r General

IN TESTIMONY that the above is a copy of the original remaining on file in the
 Department of Internal Affairs of Pennsylvania, made con-
 formably to an Act of Assembly approved the 16th day of
 February, 1833, I have hereunto set my Hand and caused
 the Seal of said Department to be affixed at Harrisburg, this
 twenty second day of March 1895.

Joac P. Brown
 Secretary of Internal Affairs.